



# Southville News

## Happy Friday!

**Allergy reminder...** Please can I remind you to ensure that any snacks or lunches you send in with your children are nut and sesame free (this includes humous). This is to help keep our children safe, some of whom have severe allergies to these ingredients. Please also be mindful of this if you are bringing in snacks for pick up time.

**Equalities...** I am delighted to share with you our recently published Equalities Statement and Objectives document, accessed via our website here: <https://www.southville.bristol.sch.uk/media/1723/southville-equalities-statement-and-strategic-objectives-approved-221122.pdf>

Written as a collaboration between senior leaders and governors, this document is driven by our values and is intended to provide an overview of our current ethos and future aims within this critical aspect of school life.

Next term I will share more details of the plans and ideas we have in the pipeline.

**Paying for dinners (Myrtle site)...** To help with the transition to parentmail for ordering school dinners, on occasions we have provided a meal for any child who hasn't had one booked, and asked the parent to refund the account afterwards.

Please be aware that after half term we will no longer be able to provide a meal unless there is credit on your account. If your child comes into school without a packed lunch and with no school meal ordered, we will phone you to let you know. You will have the option of arranging for a packed lunch to be brought to school or paying and ordering online there and then.

If you think you may qualify for free school meals, or are experiencing financial difficulties, please contact Paula Mathias, who will be able to give you confidential advice and support.

**Stationery donation...** I wanted to give a 'shout out' (as the young folks say) to Summer Boarding Courses who recently donated to us a huge amount of stationery. You would not believe the whoop of delight that came

from various staff members as the news broke so many thanks to SBC them for their generosity (and to our contact in the parent community for arranging it).

**Author Visit...** On Monday 27th February, during the week of World Book Day, local author Katharine Orton will be doing an assembly for year 3-6. She will be discussing her job as an author, her passion for reading and her top tips for writing fantasy novels.

We would like to thank our local book shop, Story Smiths (North Street) for putting us in touch with Katharine and for gifting our school library with a copy of each of her books for all key stage 2 children to access.

If you are interested in purchasing one of Katharine's books, Story Smiths can deliver and distribute the books in school on that day, which Katharine will also sign. The book details and pre-order link are below:

Nevertell - 9781406385182 - £7.00

Glassheart - 9781406385236 - £7.00

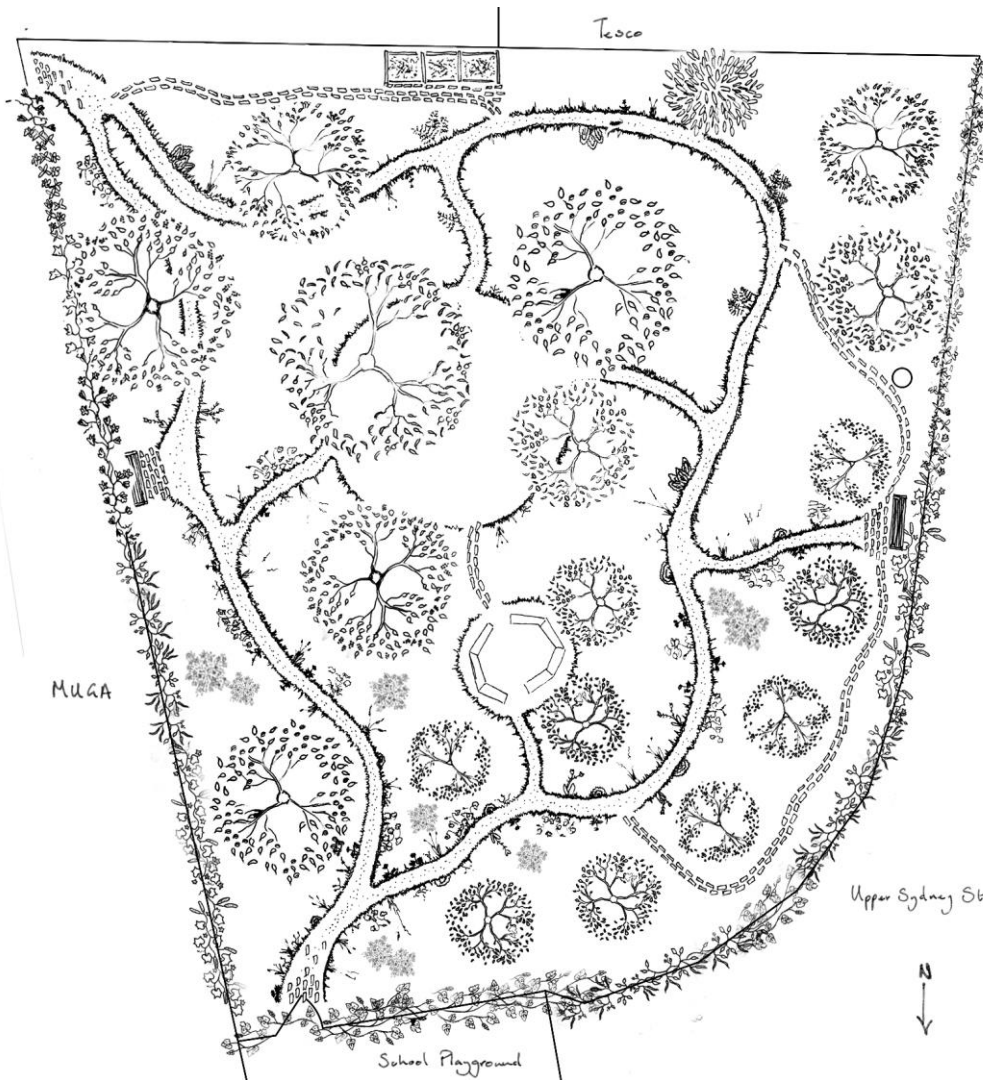
Mountainfell - 9781529503296 - £7.00

<https://storysmithbooks.com/katharineortonsouthville>

(Please order before 22<sup>nd</sup> February for it to be delivered to school in time. Include your child's name and class on the order notes)

**Request for old bricks...** Over the last few weeks a few parents have been supporting the School team with the development of the garden space behind the MUGA at Myrtle site. The plans are progressing well, with a timeline in place and an ambitious target to get started in the coming weeks. The space is full of fruit trees and as such we have planned for path ways to meander around the trees to encourage adventures and play. There will be compost bays, some touches of vegetable planting and a scattering of perennial plants to make this valuable green space productive all year.

The main reason for developing the site is to encourage time in a more natural green space and it will be open for all children to use.



Our lead for the project has been Rachel Seaton-Lucas, a parent at the school and a professional garden designer who has designed the space beautifully.

We will come with more of an update when the timeline is firm, but we would like to mention that if you have any bricks at home, please can you keep hold of them (please do not bring them in to school just yet!). We need a few to make some of the paths. Lots of the aggregate has already been sourced. We would also absolutely love any help with digging out the paths after half term. We will confirm the date and time of this very soon. Look forward to sharing further updates.

Team Orchard!